

\*

Scale esatonali o sc. di Debussy

Two staves of music. The first staff shows an ascending hexatonic scale: C4, D4, E4, F#4, G#4, A4. The second staff shows a descending hexatonic scale: G#4, F#4, E4, D4, C4. The notes are marked with sharp signs for F# and G#.

Scala pentatonica maggiore

Scala pentatonica minore

Two staves of music. The first staff shows an ascending major pentatonic scale: C4, D4, E4, G4, A4. The second staff shows a descending minor pentatonic scale: A4, G4, F4, E4, C4. The notes are marked with a flat sign for F4.

Scala cromatica

(discendere in modo speculare)

Two staves of music. The first staff shows an ascending chromatic scale: C4, C#4, D4, D#4, E4, E#4, F4, F#4, G4, G#4, A4, A#4, B4, B#4, C5. The second staff shows a descending chromatic scale: B4, B#4, A4, A#4, G4, G#4, F4, F#4, E4, E#4, D4, D#4, C4, C#4, B4. Brackets are used to group the notes in pairs.

Cromatismi

(4°aum.)

(5°dim.)

Two staves of music. The first staff shows an ascending scale with a 4th degree augmentation: C4, D4, E4, F#4, G4, A4, B4, C5. The second staff shows a descending scale with a 5th degree diminution: B4, A4, G4, F4, E4, D4, C4. The notes are marked with sharp and flat signs.

Successioni per terze

Two staves of music. The first staff shows an ascending sequence of notes in thirds: C4, E4, G4, B4, C5. The second staff shows a descending sequence of notes in thirds: B4, G4, E4, C4.

Successioni per quarte

Two staves of music. The first staff shows an ascending sequence of notes in fourths: C4, F4, B4, C5. The second staff shows a descending sequence of notes in fourths: B4, F4, C4.

Arpeggio esteso

Two staves of music. The first staff shows an ascending extended arpeggio: C4, E4, G4, B4, C5. The second staff shows a descending extended arpeggio: B4, F4, C4.

Scale e successioni alternative

Scale semitono/tono

Musical notation for a semitone/tono scale in three staves. The first staff is in treble clef, the second in alto clef, and the third in bass clef. The scale consists of half notes with intervals of semitone and tone. The notes are: C4, C#4, D4, D#4, E4, E#4, F4, F#4, G4, G#4, A4, A#4, B4, B#4, C5.

Var.1 sc. semitono/tono

Musical notation for a semitone/tono scale variation in three staves. The first staff is in treble clef, the second in alto clef, and the third in bass clef. The scale consists of eighth notes with intervals of semitone and tone. The notes are: C4, C#4, D4, D#4, E4, E#4, F4, F#4, G4, G#4, A4, A#4, B4, B#4, C5.

Var.2 sc. semitono/tono

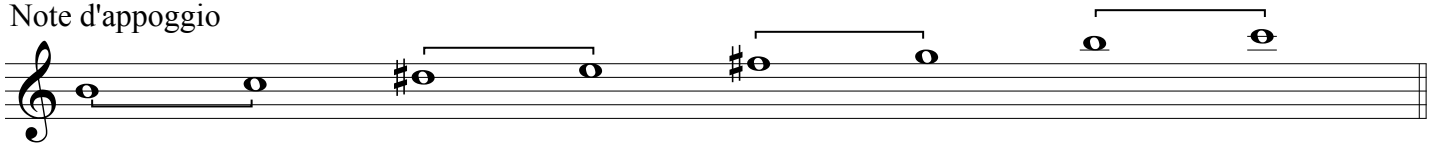
Musical notation for a semitone/tono scale variation in one staff. The scale consists of eighth notes with intervals of semitone and tone. The notes are: C4, C#4, D4, D#4, E4, E#4, F4, F#4, G4, G#4, A4, A#4, B4, B#4, C5. The word "ecc." is written at the end of the staff.

Var.3 sc. semitono/tono

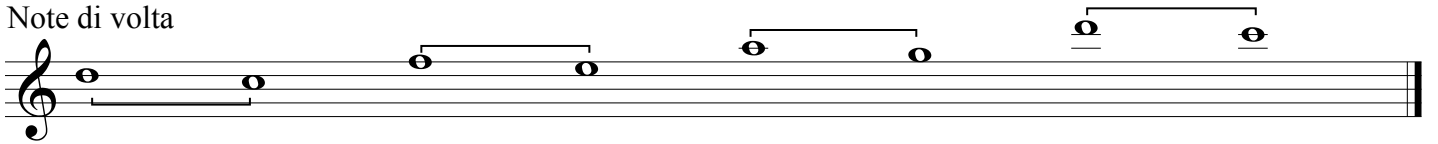
Musical notation for a semitone/tono scale variation in one staff. The scale consists of eighth notes with intervals of semitone and tone. The notes are: C4, C#4, D4, D#4, E4, E#4, F4, F#4, G4, G#4, A4, A#4, B4, B#4, C5. The word "ecc." is written at the end of the staff.

## Scale e successioni alternative

Note d'appoggio



Note di volta



Var.1



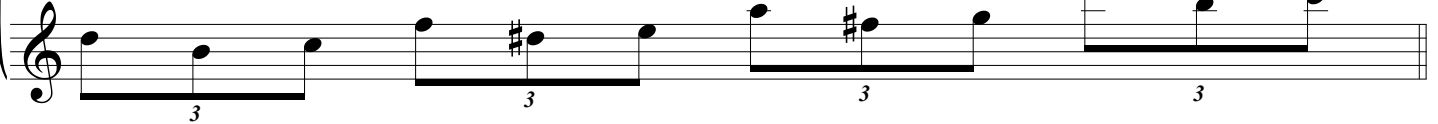
Var.2



Var.3



Var.4



\*

**Eeguire, possibilmente, tutti gli studi suggeriti:**

- In tutte le tonalità.
- Su tutta l'estensione dello strumento.
- Sia staccati che legati.
- Meglio se con l'ausilio di una base musicale ("J.Aebersold: Vol.24 Major&minor").